

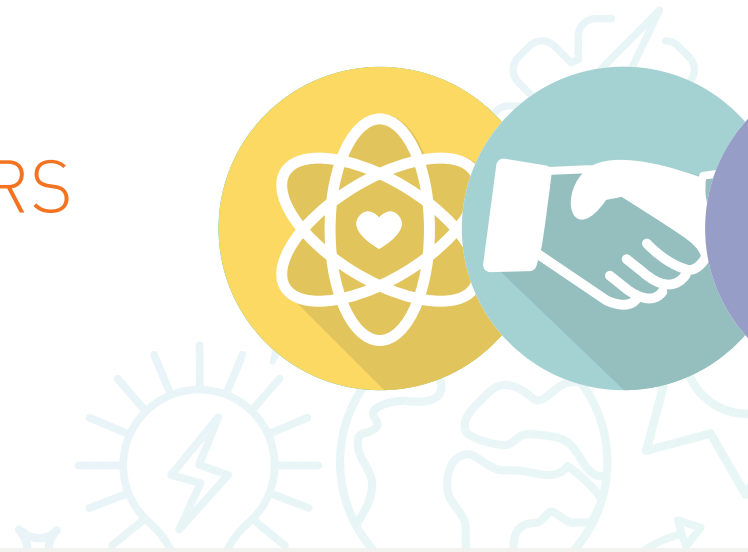


SCSI

Chartered property,
land and construction
surveyors

SCSI
CORPORATE
SOCIAL
RESPONSIBILITY
POLICY

SCSI CSR POLICY: SUPPORTING MEMBERS AND THE WIDER COMMUNITY



CORPORATE SOCIAL RESPONSIBILITY (CSR) POLICIES AIM TO GUARANTEE THAT COMPANIES AND ORGANISATIONS WORK ETHICALLY, CONSIDERING HUMAN RIGHTS AS WELL AS THE SOCIAL, ECONOMIC AND ENVIRONMENTAL IMPACTS OF WHAT THEY DO DAY TO DAY.

Introduction to Corporate Social Responsibility

Corporate social responsibility (CSR) means organisations taking responsibility for their impact on society and the environment. CSR policies integrate societal and environmental concerns into the business plan and operations to empower staff, volunteers and partners to work jointly towards these goals. The Society of Chartered Surveyors Ireland (SCSI) CSR Policy is a fundamental component of our business, and is guided by our core values as expressed in our Strategic Plan, Roadmap 24: Representing, Supporting, Connecting, Influencing. We understand the importance of being a good corporate citizen, ethically and responsibly managing all aspects of our business so that we can make a difference that matters to our members, our environment, our community and the marketplace, and among our employees and other stakeholders.

Who we are and what we do

The SCSI is the independent professional body for Chartered Surveyors practising in Ireland. We work in partnership with RICS, the pre-eminent Chartered professional body for the property, land and construction sectors around the world. The SCSI and RICS act in

the public interest: setting and maintaining the highest standards of competence and integrity among the profession, and providing impartial, authoritative advice on key issues for business, society and governments worldwide. Members of the profession work across the private, public, educational and not-for-profit sectors. Collectively, SCSI members are involved in the full life cycle of property, land and construction. Members' services are diverse and can include offering strategic advice on economics, valuation, law, technology, finance and management. All aspects of the profession, from education through to qualification and the continuing maintenance of the highest professional standards, are regulated and overseen through the partnership of the SCSI and RICS, in the public interest.

Our members

The SCSI enforces the highest professional standards for the benefit of the public and its members. Every member is regulated by the SCSI on all matters and individual members are responsible and accountable in their professional lives. As a thought leader, the SCSI regularly publishes and contributes to reports, articles, consumer columns and debates across print, online and broadcast



media. The SCSI is seen as an authoritative commentator on all property, land and construction-related matters.

Looking after our members and employees

The SCSI is compliant with all relevant regulation and legislation with regard to employment law and the property, land and construction industry in Ireland.

We work to be true to our mission statement: to connect, support and represent our members, as leading experts working across property, land and construction.

Acting in the public interest

SCSI members offer professional, impartial advice to our clients, which is compliant with all relevant legislation, and reflects our vision to lead the development of a sustainable property, land and construction sector. We develop professional standards, guidance and information to ensure that it meets the core objective of protecting the public interest.

Environment

As Chartered Surveyors, we are aware of how our business activities impact upon the environment, and we are committed to ensuring that these activities have the least

possible detrimental effect on the environment. We commit to following sustainable business practices in our day-to-day operations, and to encouraging and supporting our clients and colleagues to instil these practices in their lives also. Our Sustainability Group works to promote sustainable practice to all members, and to the public, for example through Surveyors Declare, our invitation to all members to sign up to a commitment to work towards a better environment for all.

Read more about Surveyors Declare at:

<https://scsi.ie/members-area/my-professional-journey/surveyors-declare/>.

Community engagement

As a membership organisation supporting our community both regionally and nationally, we are involved in a number of fundraising initiatives:

- Lionheart, the benevolent fund for Chartered Surveyors and their families;
- fundraising by the Nexus Committee, which represents surveyors in the early stages of their career;
- Focus Ireland Shine a Light campaign; and,
- Christmas appeal.

Advocating for change

The SCSI is also committed to initiatives that will increase equality, diversity and inclusion (EDI) in our profession and in society:

- supporting Pride in June every year;
- Women in Surveying Mentoring and Leadership Development Programme;
- through Surveyors Declare (sign up at scsi.ie/declare/);
- collaborating with other member organisations; and,
- our educational CPD programme.

Measurement

The SCSI's Strategic Plan, Roadmap 24, contains specific commitments to contribute to communities through CSR activities, and to review and measure our activities in the EDI and CSR spheres.

These include:

- a review of EDI in the surveying profession to identify any barriers to entry and develop supports to increase diversity;
- a review of SCSI policies to ensure that they support all members equally; and,
- continued development of the SCSI Women in Surveying Mentoring and Leadership Development Programme.



**Society of Chartered
Surveyors Ireland**

38 Merrion Square
Grand Canal Dock
Dublin 2, Ireland

T +353 (0) 1 644 5500

E info@scsi.ie

W www.scsi.ie